

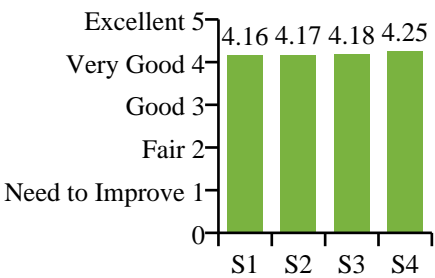
Feedback Survey Report (consolidated)

Top Sheet

Survey ID	13
Overall Rating	4.19 / 5
Created at	30-09-2024 10:09:19 AM
Type	SSS
Name	Students Satisfaction Survey
ACY	2024-25 (Odd)
Seriел No.	2

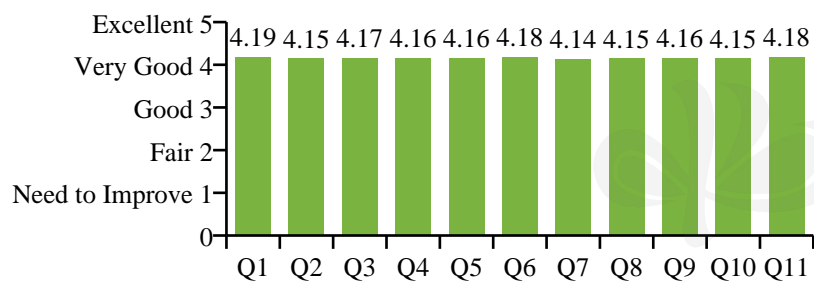
All Sections (S)

No	Q#	Parameter	Average
1	S1	On curriculum & Syllabus, Teaching-Learning and Evaluation	4.16
2	S2	Infrastructure	4.17
3	S3	Support Systems	4.18
4	S4	Overall Institution Experience	4.25



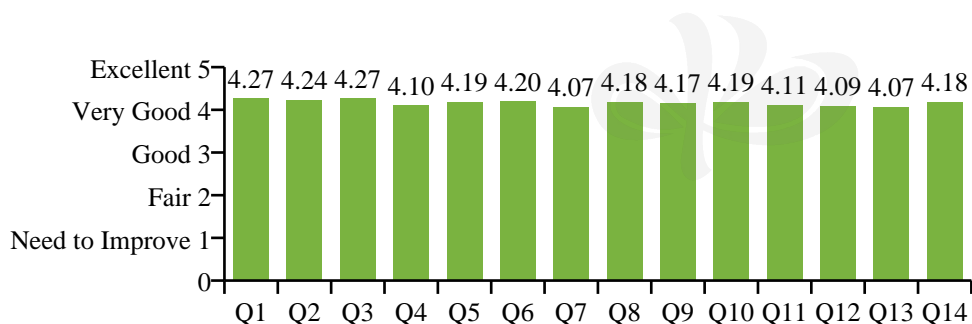
**S1: On curriculum & Syllabus, Teaching-Learning and Evaluation**

No	Q#	Parameter	Average
1	Q1	How would you rate curriculum and syllabi?	4.19
2	Q2	How would you rate extent of syllabi covered in the class?	4.15
3	Q3	How well did the teachers prepare for the classes?	4.17
4	Q4	How would you rate the usage of teaching aids and usage of video tools by faculty to facilitate teaching (Projector, Smart board)?	4.16
5	Q5	How would you rate the fairness in assessment processes (CIAT, Quiz, Assignments)?	4.16
6	Q6	How would you rate the faculty approach to teaching?	4.18
7	Q7	How well did the teachers explain the concepts through examples / applications?	4.14
8	Q8	How would you rate the opportunity for students to participate in internship, student exchange and field visit?	4.15
9	Q9	How would you rate the opportunities for learning in terms of expert lectures, workshop, value added course, conferences, competitions?	4.16
10	Q10	Support received from Technical Staff in Labs: How would you rate the technical staff knowledge and their support in laboratory?	4.15
11	Q11	Overall Learning Experience at KPRIET	4.18



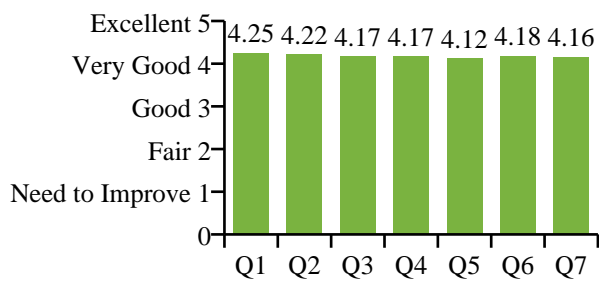
**S2: Infrastructure**

No	Q#	Parameter	Average
1	Q1	Classroom Facilities: How would you rate the class room facilities at the KPRIET?	4.27
2	Q2	Laboratory Facilities: How would you rate the availability and condition of equipment and resources in the laboratory?	4.24
3	Q3	Library Reading Material and Digital Resources: How do you rate the collection of books and resources?	4.27
4	Q4	Computer and Internet Facility: How would you rate speed of computer and internet facilities?	4.1
5	Q5	Learning Management System: How would you rate the learning management system?	4.19
6	Q6	Sports Facility: How would you rate the quality of facilities available in sports complex?	4.2
7	Q7	Food Outlets / Canteens: How would you rate the facilities available in the campus for court / canteen / cafeteria?	4.07
8	Q8	Drinking Water Facility: How would you rate the availability and quality of drinking water?	4.18
9	Q9	Washroom Facilities: How would you rate the cleanliness and maintenance of the rest room/washroom facilities?	4.17
10	Q10	Stationery Store / Reprographic Facility: How would you rate the availability and convenience of stationary, photocopying and printing services?	4.19
11	Q11	ATM Facility: How would you rate the convenience of ATM facilities in campus?	4.11
12	Q12	Healthcare Facility: How would you rate the accessibility and quality of healthcare facilities in campus?	4.09
13	Q13	Transport Facility: How would you rate the availability and efficiency of transport facilities? (For those who avail the college bus only)	4.07
14	Q14	Book-free Day: How would you rate the Experiential Saturday and the events organized?	4.18



## S3: Support Systems

No	Q#	Parameter	Average
1	Q1	Was your mentor approachable, whenever required?	4.25
2	Q2	Support received from Mentor: How would you rate the support offered by your mentor?	4.22
3	Q3	Support received from Administrative Offices: How would you rate the administrative supports (Student affairs, Accounts, Scholarship section, etc.,) and system?	4.17
4	Q4	Support received from Students' Welfare Office: How would you rate the support for students' welfare Schemes?	4.17
5	Q5	Placement and Training and Career Development Activities: How would you rate the placement and career guidance support available in KPRIET?	4.12
6	Q6	Students Counseling Support: How would you rate the support from student counsellor / Psychologists?	4.18
7	Q7	Redressal of grievances: How would you rate the grievances redressal system of the KPRIET?	4.16



S4: Overall Institution Experience

No	Q#	Parameter	Average
1	Q1	Your Overall Institution Experience	4.25



\*\*\* End of Statement \*\*\*

